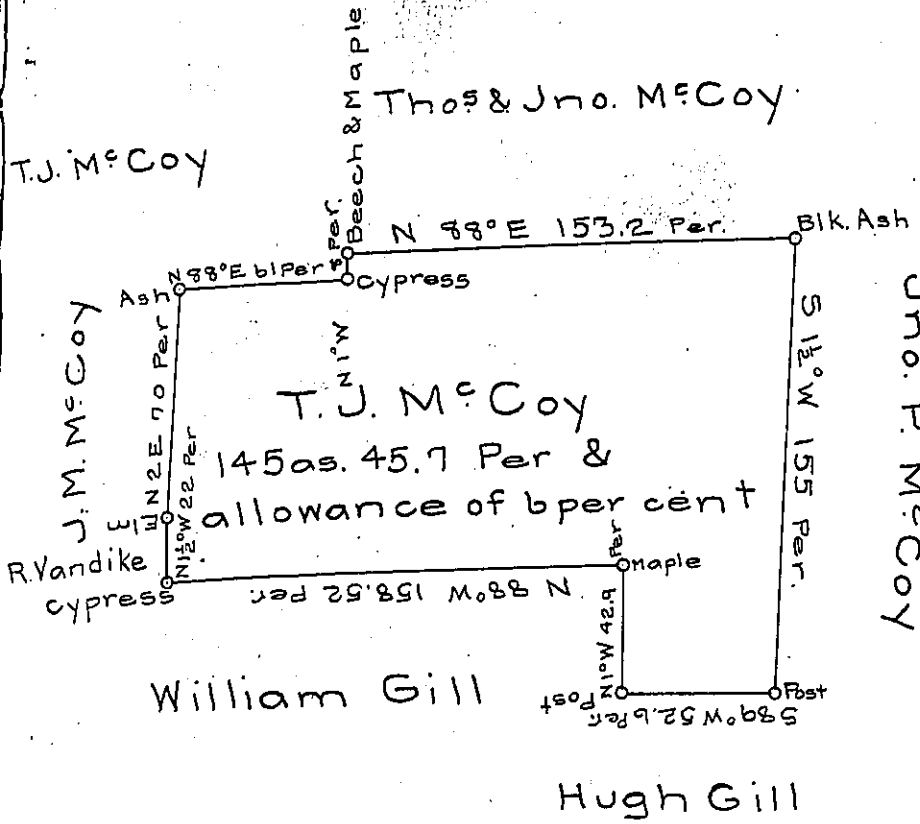


FORM No. 11

B-11-44



Course	Dist.	N	S	E	W
N 88 E	61.	2.13		60.96	
N 1 W	8.	8.			.14
N 88 E	153.2	5.35		153.11	
S 1 1/2 W	155.		154.95		4.06
S 89 W	52.6		.92		52.57
N 1 W	42.9	42.89			.75
N 88 W	158.53	5.55			158.41
N 1 1/2 W	22.	21.99			.58
N 2 E	70.	69.96		2.44	
		155.87	155.87	216.51	216.51

24688.6 Perches

145 acres 45.7 perches & allowance of 6 per cent  
for Roads &c.

T. McCoy  
W. McCoy } Chain bearers  
                  } sworn

Surveyed the land as described above situate on the waters of Swamp Creek, Pine township Mercer County containing one hundred and forty five acres forty five perches and seven tenths of a perch and allowance of six per cent for roads &c. for Thomas Jefferson McCoy in pursuance of his actual settlement and improvement thereon. Surveyed November 23<sup>d</sup> 1853.

O.H. Gould D.S. M.C.

N.B. This tract is one entire swamp, excepting about an acre, a little hill of sand near the centre.

IN TESTIMONY that the above is a copy of the original remaining on file in the Department of Internal Affairs of Pennsylvania, made conformably to an Act of Assembly approved the 16th day of February, 1833, I have hereunto set my Hand and caused the Seal of said Department to be affixed at Harrisburg, this seventh day of May 1906.

*George P. Pennington*  
Secretary of Internal Affairs.